

Turning Electricity On/Off with a Program

With the correct materials, you can set up your Baseline irrigation controller to have a connected 110V electrical circuit turn on/off based on the settings in a program.

You could set up this system to control landscape lighting at your site, to operate a pump in a water feature, or to turn electricity on/off at a remote location.

Baseline has tested this system and found it to be reliable with the materials listed below. We cannot guarantee success if you use different materials.

Required Materials

- Baseline irrigation controller, either the BaseStation 1000 or BaseStation 3200
- Two-wire path
- Dayton 5X826N relay
- Dayton 5X82N socket
- Baseline 5201 biCoder

Overview of the Steps

Step 1 – Connect the Dayton relay to the socket and install the relay in the area where the electrical circuit is located.

Step 2 – Connect the biCoder to the two-wire path.

Step 3 – Make the electrical connections between the biCoder, the relay, and the electrical circuit.

Step 4 – Program the controller.

Step 1 – Installing the Dayton Relay

1. Align the pins on the Dayton relay with the ports on the socket and push the two pieces together securely.

Note: The socket has two banks of screw terminals. The terminals on the side with the red/orange tab are used for power out. The terminals on the other side are for power in and the biCoder wires.

2. Install the relay in a waterproof location where there is access to the electrical circuit that you want to turn on/off.

Step 2 – Installing the biCoder

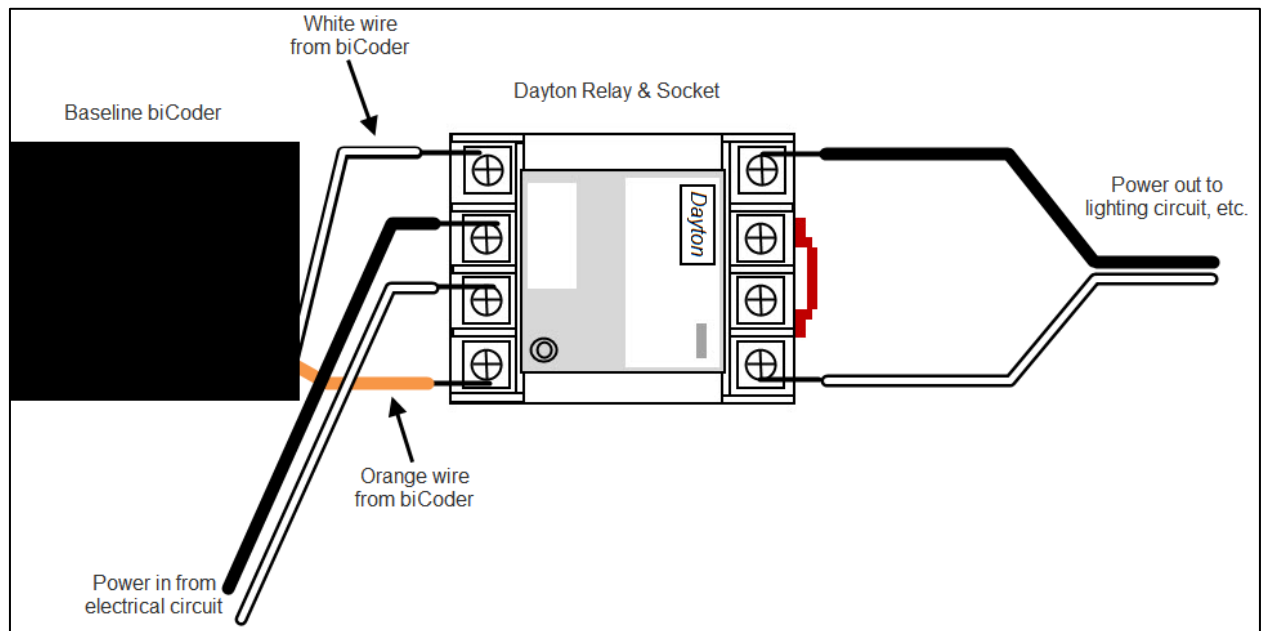
1. Position the biCoder in a location where the red and black wires can be connected to the two-wire and the orange and white wires can be connected to the relay.

Note: You can add two-wire between the biCoder and the two-wire path and up to 250 ft of wire between the biCoder and the relay.

2. Connect the red and black wires to the two-wire. Make all connections with wire nuts, and then replace them with 3M™ DBR/Y-6 or equivalent connectors after the device has been tested.
3. Write down the serial number of the biCoder. You will need it when you program the controller.

Step 3 – Connecting the biCoder, the Relay, and the Electrical Circuit

Refer to the schematic below while following the instructions to wire the biCoder, the relay, and the electrical circuit.



1. Connect the orange and white wires from the biCoder to the outer terminals in the bank on the opposite side of the socket from the red/orange tab.

Note: You can add up to 250 ft of wire between the biCoder and the relay.

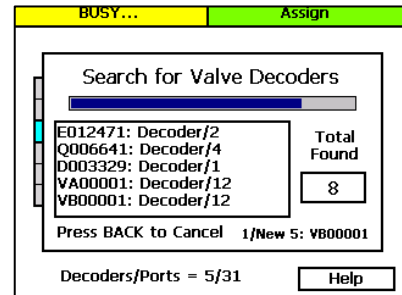
2. Connect the black and white wires from the incoming electrical circuit to the inner terminals in the bank on the opposite side of the socket from the red/orange tab.
3. Connect the black and white wires for the outgoing electrical circuit to the outer terminals in the bank on the same side of the socket as the red/orange tab.
4. Connect the lighting circuit or other wiring circuit that you want to control to the outgoing wires from the relay.

Step 4 – Programming the Controller

BaseStation 3200

Search For and Assign the biCoder

1. On the BaseStation 3200 controller, turn the dial to the **Assign** position.
2. Press the **+** or **-** button to select **Search** in the Assign screen.
3. Press the **Enter** button to search for biCoders. The search may take several minutes to complete. You will see a status screen like the one shown here while the search is in progress.

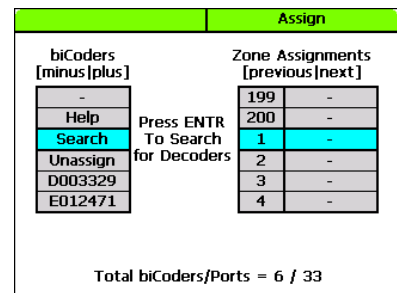


The display shows the number of devices found and the number of ports or addresses available.

4. When the biCoders list displays, press the **+** or **-** button to select the serial number of the biCoder that is connected to the relay.

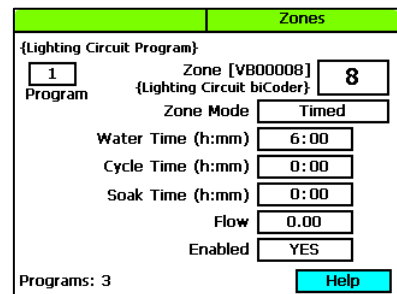
Note: If you are a BaseManager user, you can add a description to the biCoder, which will make it easy to identify.

5. Press the **Next** or **Previous** button to move to the **Zone Assignments** column and select an available zone number.
6. Press the **Enter** button to assign the selected biCoder to that zone number. Remember this number.



Configure the biCoder Settings

1. On the BaseStation 3200 controller, turn the dial to the **Zones** position. The Zones screen displays for the first zone.
2. In the **Zone** field press the **+** or **-** button to change the number to the zone that you assigned the relay biCoder to.



3. Press the **Next** button to move to the **Zone Mode** field. Press the **+** or **-** button to change the value in the field to **Timed**.
4. Press the **Next** button to move to the **Water Time** field. Set the amount of time that you want to relay to be turned on.
 - If you want to increase the value in the hours place, press the **+** button.
 - If you want to change the value in the minutes place, press the **Next** button, and then press the **+** or **-** button.
5. Leave the **Cycle Time**, **Soak Time**, and **Flow** fields set to zero.
6. Press the **Next** button to move to the **Enabled** field. Press the **+** or **-** button to set the value in the field to **YES**.

IMPORTANT NOTE! This zone must have a run time in only one program – the program that is dedicated to operating the electrical circuit. It’s best to make this Program 1, so it will run as needed and not be restricted by zone concurrency settings.

- The number in the **Program** field in the upper-left corner of the screen indicates what program these zone settings are for. A zone can be removed from a program, assigned to a different program, or assigned to more than one program. To make a change to how the zone is assigned to a program, perform one of the following actions:

Note: To move to the Program field, press the Next or Previous button.

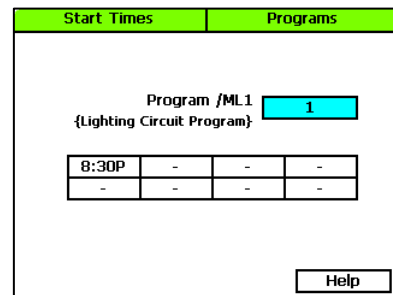
- To remove the zone from the current program, press the **Previous** button to return to the **Water Time** field, and then press the – button to remove the watering time in the field.
- To assign the zone to a different program, perform the previous task to remove the zone from the current program. Move to the **Program** field, and press the + or – button to change the number to the new program that you want the zone to be assigned to.

Set Up the Start Times for the Program

- On the BaseStation 3200 controller, turn the dial to the **Programs** position.
- The **Program Start Times Setup** option should be highlighted. If it is not highlighted, press the **Next** button to highlight it.

- Press the **Enter** button. The Start Times screen displays.
- Verify that the number displayed in the **Program** field matches the program that you want to set start times for. If you want to select a different program, press the + or – button to change the program number.

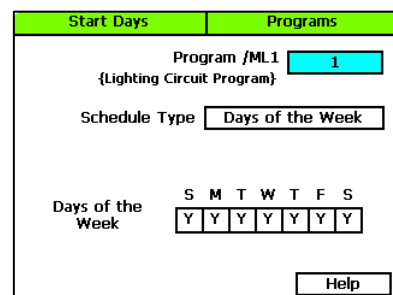
Note: If you are a BaseManager user, you can add a description to the program, which will make it easy to identify.



- Press the **Next** button to move to the start times grid.
- Press the + or – button to set the time in the first cell.
- Press the **Next** button to move to the next cell in the start times grid, and then press the + or – button to set additional start times as needed.

Set Up the Start Days for a Program

- On the BaseStation 3200 controller, turn the dial to the **Programs** position.
- Press the **Next** button to highlight the **Program Start Days Setup** option, and then press the **Enter** button. The Start Days screen displays.
- Verify that the number displayed in the **Program** field matches the program that you want to set start days for. If you want to select a different program, press the + or – button to change the program number.



Turning Electricity On/Off with a Program

4. Press the **Next** button to move to the **Schedule Type** field and select one of the intervals.

Note: Refer to the BaseStation 3200 User Manual for a description of the intervals.

Set the Concurrent Zones for the Program and the Controller

1. On the BaseStation 3200 controller, turn the dial to the **Programs** position.
2. Press the **Next** button to select the **Concurrent Zones Setup** option. The Concurrent Zones screen displays.
3. In the **Program** column, press the + or – button to select the program that you want to set up concurrent zones for.
4. Press the **Next** button to move to the **Concurrent Zones** column, and then press the + or – button to change the value in the field.
5. Press the **Next** button to move to the **Total Allowed** field, and then press the + or – button to change the value in the field. This field indicates the number of concurrent zones for all programs added together.

Concurrent Zones		Programs	
{Lighting Circuit Program}			
Program		Concurrent Zones	
98		1	
99		1	
1		1	
2		1	
3		1	
4		1	
Total Allowed			5
<input type="button" value="Help"/>			

BaseStation 1000

Search For and Assign the biCoder

1. On the BaseStation 1000 controller, press the **Search & Assign** button. The Search & Assign menu displays.
2. If the **Zone** option is highlighted, press the **OK** button to select it. If Zone is not highlighted, press the \uparrow or \downarrow button to highlight it, and then press the **OK** button. The Zone screen displays.
3. If the **Device Assignment** option is highlighted, press the **OK** button to select it. If Device Assignment is not highlighted, press the \uparrow or \downarrow button to highlight it, and then press the **OK** button. The Zone Assignment screen displays.
4. When the **Search** option in the Action column is highlighted, press the **OK** button to search for biCoders.

When the controller finds the devices, their serial numbers display in the Action column.

5. Press the \uparrow or \downarrow button to move through the list of devices in the Action column. Highlight the serial number biCoder that is connected to the relay.
6. Press the \Rightarrow button to move to the Zone column.
7. Press the \uparrow or \downarrow button to move through the list of zones. Highlight the zone that you want to assign the device to. Remember this number.
8. Press the **OK** button to select the highlighted zone. The serial number of the device that you selected in the Action column now displays next to the zone number in the Zone column.

Zone Assignment	
ACTION	ZONE
E012472	
D003329	
0006641	1-None
0006642	2-None
0006643	3-None

Note: After you assign a device to a specific use in the BaseStation 1000 system, the device is automatically enabled.

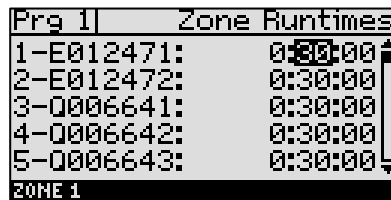
Set Up the Zone Runtime for the Program

IMPORTANT NOTE! This zone must have a runtime in only one program – the program that is dedicated to operating the electrical circuit. It's best to make this Program 1, so it will run as needed and not be restricted by zone concurrency settings.

1. On the BaseStation 1000 controller, press the **Program Setup** button. The Program Setup menu displays.
2. If the program that you want to modify displays in the upper-left corner of the screen, continue to step 3. Otherwise, press the **PRG** button until the program that you want to modify displays in the upper-left corner of the screen.

Note: To move backwards in the list of programs, press and hold the PRG button, and then press the – button repeatedly.

3. The **Zone Runtimes** option should be highlighted. If it is not highlighted, press the ↑ or ↓ button to highlight it, and then press the **OK** button. The Zone Runtimes screen displays. Zones are identified with a sequential number and by the serial number of the attached biCoder.



Prq 1	Zone Runtimes
1-E012471:	0:30:00
2-E012472:	0:30:00
3-0006641:	0:30:00
4-0006642:	0:30:00
5-0006643:	0:30:00

ZONE 1

4. Make sure that the runtimes for all zones except the one that is assigned to the relay are set to zero.
 - To move to the hour placeholder, press the ← button.
 - To move to the seconds placeholder, press the ⇒ button.
 - To change the time, press the + or – button.

Note: To rapidly increase or decrease the value, press and hold the + button or the – button.

5. Set the runtime for the zone that is assigned to the relay for the length of time that you want the electrical circuit to be active.

Set Up the Start Day and Start Times for the Program

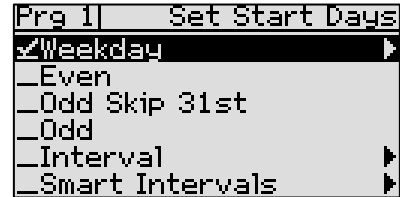
1. On the BaseStation 1000 controller, press the **Program Setup** button. The Program Setup menu displays.
2. If the program that you want to modify displays in the upper-left corner of the screen, continue to step 3. Otherwise, press the **PRG** button until the program that you want to modify displays in the upper-left corner of the screen.

Note: To move backwards in the list of programs, press and hold the PRG button, and then press the – button repeatedly.

3. Press the ↓ button to highlight the **Setup Prg. Start** option, and then press the **OK** button. The Setup Prg. Start screen displays the list of start conditions.
4. Press the ↓ button to highlight the **Day & Time Start** option, and then press the **OK** button. A checkmark displays next to the Day & Time Start option.
5. Press the ⇒ button to go to the Day & Time Start menu.

Turning Electricity On/Off with a Program

6. Press the \downarrow button to highlight the **Set Start Days** option, and then press the **OK** button. The Set Start Days screen displays.
7. Press the \downarrow button to highlight one of the intervals, and then press the **OK** button.



Note: Refer to the BaseStation 1000 User Manual for a description of the intervals.

8. Press the **BACK** button to return to the Day & Time Start menu.
9. Press the \downarrow button to highlight the **Set Start Times** option, and then press the **OK** button. The Set Start Times screen displays.

Note: Each active program must have at least one start time. Programs that have no start times will not run.

10. Press the \downarrow button to highlight the box for the start time that you want to change.
11. Press the + or – button to change the number in the box.

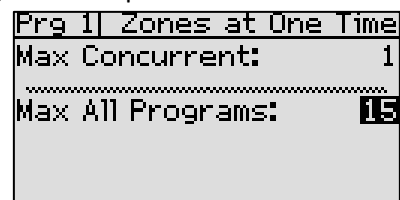
Note: To rapidly increase or decrease the number, press and hold the + button or the – button.

Set the Concurrent Zones for the Program and the Controller

1. On the BaseStation 1000 controller, press the **Program Setup** button. The Program Setup menu displays.
2. If the program that you want to modify displays in the upper-left corner of the screen, continue to step 3. Otherwise, press the **PRG** button until the program that you want to modify displays in the upper-left corner of the screen.

Note: To move backwards in the list of programs, press and hold the PRG button, and then press the – button repeatedly.

3. Press the \uparrow or \downarrow button to highlight the **Zones at One Time** option, and then press the **OK** button. The Zones at One Time screen displays.



4. Press the + or – button to change the number in the **Max Concurrent** field to indicate the maximum number of zones that can run at the same time in this program.
5. Press the \uparrow or \downarrow button to move to the **Max All Programs** field.
6. Press the + or – button to change the number in the **Max All Programs** field to indicate the maximum number of zones that can run at the same time when more than one program is running at once.