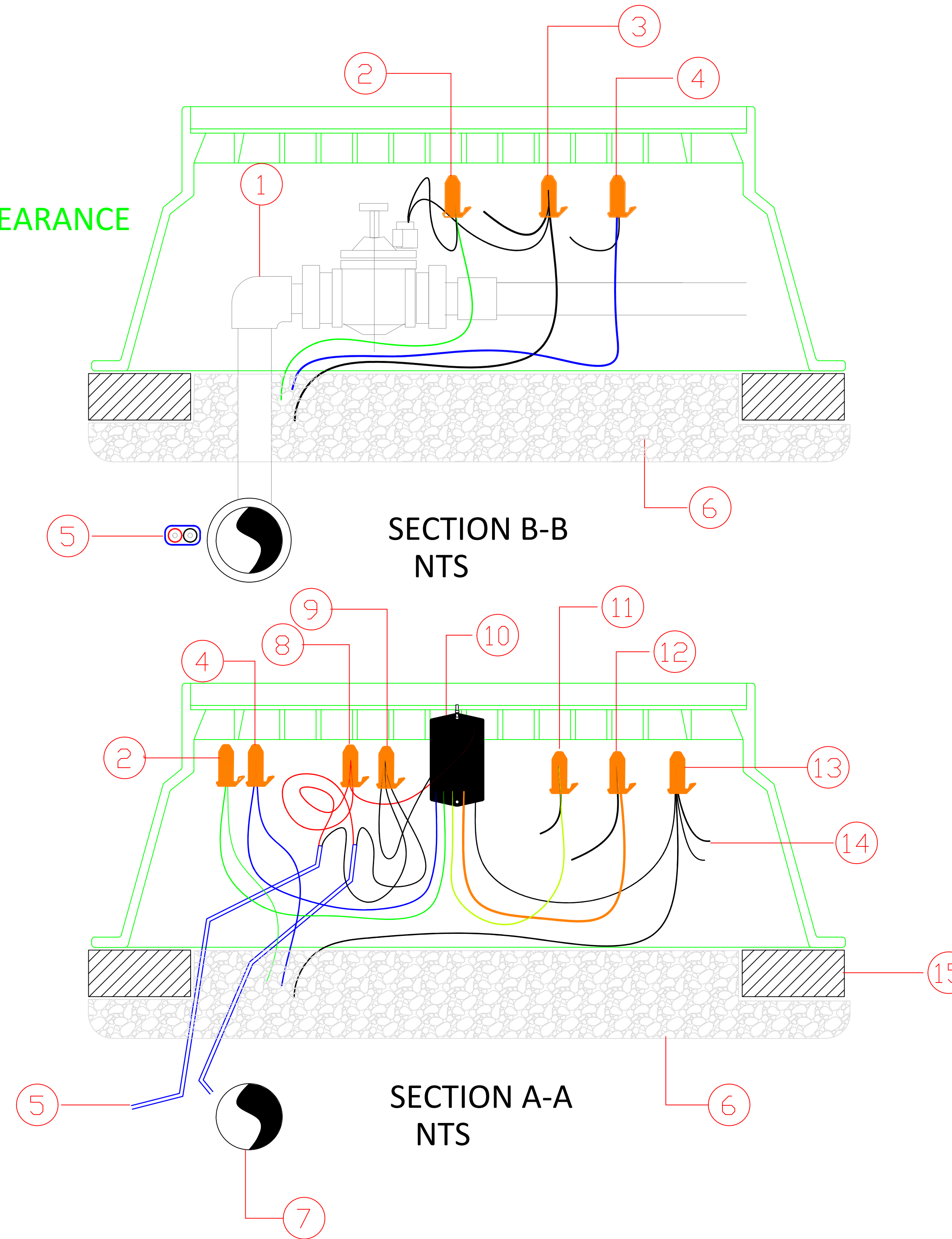
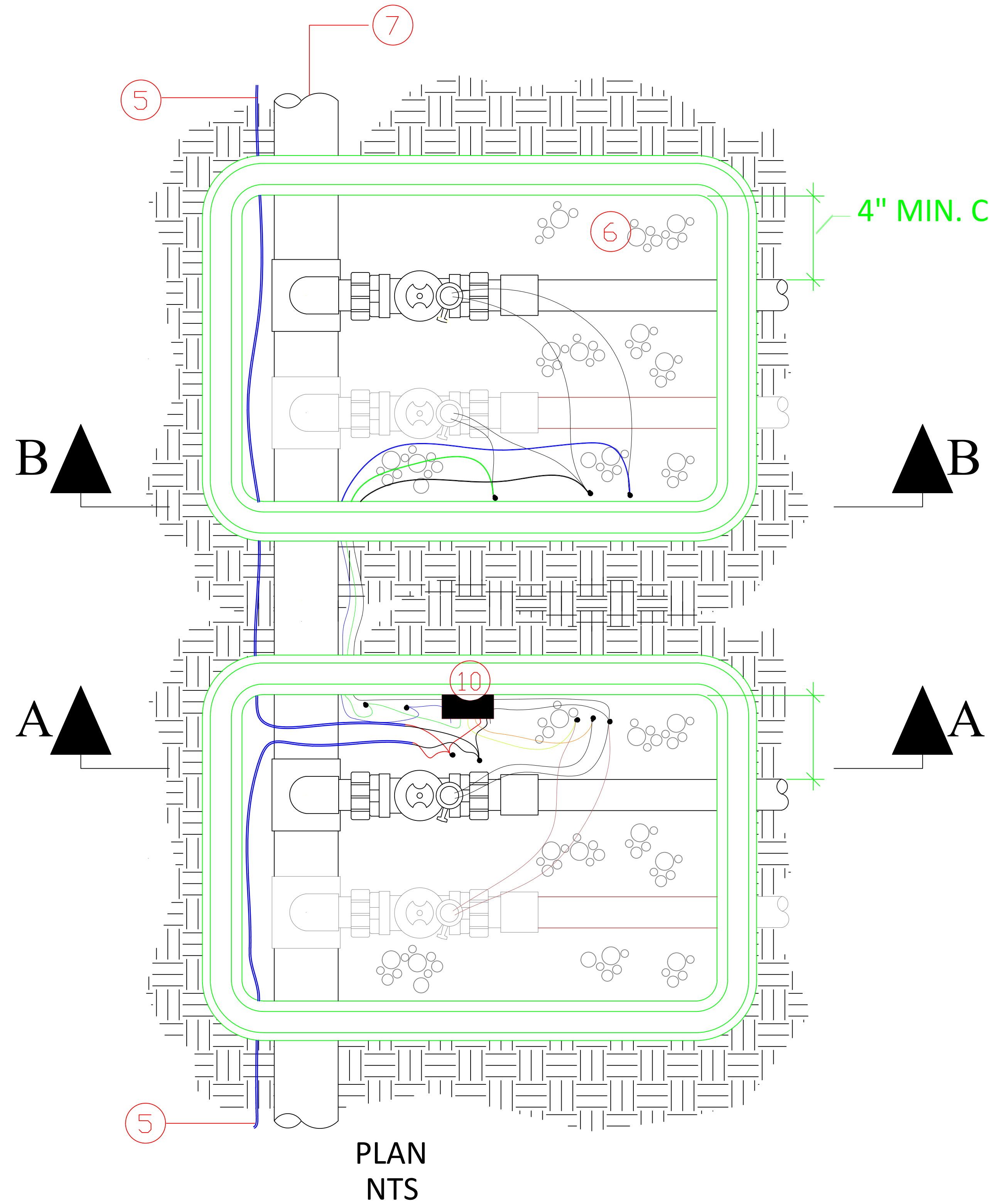


NOTE: MOISTURE-RESISTANT CONNECTORS
3M DBR/Y-6 OR EQUAL TO BE INSTALLED
IN VERTICAL POSITION AS SHOWN.



- ① VALVE AND PIPING PER PLANS
- ② MOISTURE-RESISTANT CONNECTION TO VALVE #3 (DBR/Y-6 OR EQ.)
- ③ MOISTURE-RESISTANT CONNECTION FOR COMMON WIRES FOR VALVES #3 & #4 (DBR/Y-6 OR EQ.)
- ④ MOISTURE-RESISTANT CONNECTION TO VALVE #4 (DBR/Y-6 OR EQ.)
- ⑤ TWO-WIRE - GAUGE PER PLANS
- ⑥ POROUS MATERIAL FOR DRAINAGE - 3" MINIMUM
- ⑦ MAINLINE AS PER PLANS
- ⑧ TWO-WIRE RED TO RED *biCODER* MOISTURE-RESISTANT CONNECTION (DBR/Y-6 OR EQ.)
- ⑨ TWO-WIRE BLACK TO *biCODER* BLACK MOISTURE-RESISTANT CONNECTION (DBR/Y-6 OR EQ.)
- ⑩ BASELINE BL-5404 VALVE *biCODER* - ATTACH TO VALVE BOX WITH TIE OR METAL SCREW
- ⑪ MOISTURE-RESISTANT CONNECTION TO VALVE #2 (DBR/Y-6 OR EQ.)
- ⑫ MOISTURE-RESISTANT CONNECTION TO VALVE #1 (DBR/Y-6 OR EQ.)
- ⑬ MOISTURE-RESISTANT CONNECTION FOR COMMON WIRES (DBR/Y-6 OR EQ.)
- ⑭ COMMON WIRES FOR VALVE #1 & #2
- ⑮ CORNER VALVE BOX SUPPORT (TYPICAL OF EIGHT)

BASELINE BL-5404 VALVE *biCODER* INSTALLATION

NTS